

Stort utvalg av anleggsmaskiner

Vi har et bredt spekter av maskiner og tilbehør til anleggsbransjen. Vårt hovedfokus er tyngre anleggsmaskiner og utstyr.



Sany er et av de 500 største selskapene i verden med en markedsverdi på 130 milliarder kroner. Bedriften har et enormt varesortiment innen anleggsindustrien og er for eksempel verdens ledende produsent av betongpumper og beltegående kraner.

Maskiner fra Sany leveres til hele verden. De er verdens raskest voksende gravemaskinsmerke, og er for tiden verdens 6. største gravemaskinsprodusent.

Machine Partner AS er stolt forhandler av anleggsmaskiner fra Sany.

SANY

Quality Changes the World

CHAMPION IN ITS CLASS

RELIABLE.
COST-EFFECTIVE.
PRODUCTIVE.



CONSTRUCTION MACHINERY



COMPACT EXCAVATORS
SY135C

Engine
ISUZU 4JJ1X Stage V
Rated power
78.5 kW / 2000 rpm
Bucket capacity
0.6 m³
Operating mass
14 870 kg

SANY

For challenging tasks,
you need a first-class partner

Quality comes from experience. And from new ideas. This is why we combine these two crucial factors at SANY. This is because we are one of the leading producers, having sold more than 450 000 excavators worldwide. This means that you can always rely on sophisticated products that have been tried and tested in practice. An impressive 5–7 % of our annual turnover is dedicated to research and development. This is why we give you not only our word, but also our extraordinary five-year warranty as a guarantee of how powerful and robust our products are.

450 000
EXCAVATORS SOLD
WORLDWIDE

5–7 %

TURNOVER FOR RESEARCH
AND DEVELOPMENT

**FIVE-YEAR
WARRANTY ***

Quality Changes the World

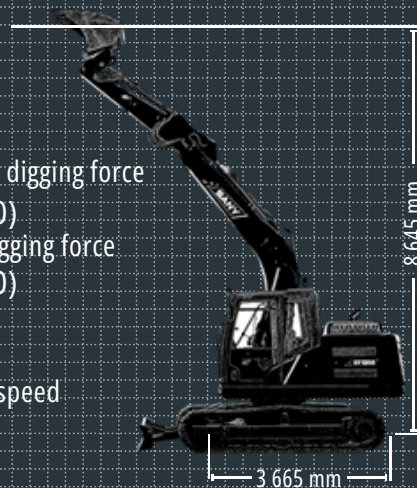


* Applicable in certain markets, please check with your local dealer.



SY135C HARD FACTS

Max. bucket digging force
103 kN (ISO)
Max. arm digging force
67 kN (ISO)
Swingspeed
12 rpm
Max. travel speed
5.3 km/h





COMPACT EXCAVATOR REDEFINED

Despite its compact design, the SANY SY135C displays impressive versatility and performance. The universal machine impresses when digging, crushing, loading and backfilling. Perfect for road and canal construction, or demolition work. Its power allows it to reach high excavating forces which would otherwise only be possible with significantly bigger machines. All that with an astonishingly large operating radius. This saves time, since the machine therefore needs to be moved far less often on the construction site. Talking of movement, the compact

dimensions of the machine facilitate easy and safe transport. Thanks to the automatic speed level control, which is unique in this class, the optimum ground speed and thrust is always selected. A state-of-the-art hydraulic system (positive flow controlled) with two variable displacement axial piston pumps and an additional pump ensure a direct response and increased machine power efficiency. The Isuzu common rail diesel engine meets the strictest emissions standard (Stage V), offering impressive durability and fuel efficiency and high customer take-up.

TOP PROPERTIES

ECONOMY

STRONG PERFORMANCE WITH LOW FUEL CONSUMPTION

More work with less fuel – the SY135C's sophisticated engine and hydraulic concept makes this a reality. The hugely powerful diesel engine, equipped with common rail technology and AdBlue emission control, puts on a strong show with its maximum torque of 375 Nm and 1 800 rpm. A choice of various operating modes and automatic speed reduction optimise fuel consumption in a tangible way. This is where power meets efficiency. The total savings thanks to improved fuel efficiency result in significant economic benefits.

QUALITY

Quality is worth it – High-quality components improve the machine's durability, while additionally increasing the intervals between each maintenance and service. The stable drive with its double-bearing top rollers is also a new addition to this class.

DIMENSIONS

Compact power – The SANY SY135C tackles work extremely efficiently as a compact excavator. High performance and impressive stability – the perfect combination to complete all tasks quickly and reliably on the construction site.

USER EXPERIENCE

Easy to maintain – The engine bonnet that can be fully opened and the clear arrangement of the key components in the centre make maintenance and service quick and easy. The 7" touch display is also impressive, boasting high resolution and intuitive operation.



SAFETY

Comprehensive protection – Alongside the camera system, beacon lamp, and travel alarm, the safety package also includes protective plates over the blade cylinders.

COMPONENTS

Reliable drive – The tried-and-tested ISUZU-4JJ1X engine guarantees reliable performance in the long term, even in harsh working conditions.

ECONOMY

Efficiency and power – The drive system reacts automatically to high thrust forces and switches automatically to a lower gear as needed.

SAFETY

Good visibility always guaranteed

Two protected cameras ensure safety is enhanced during all work or when reversing, for example. The resulting camera views are clearly displayed on the high-resolution 7" touch display.

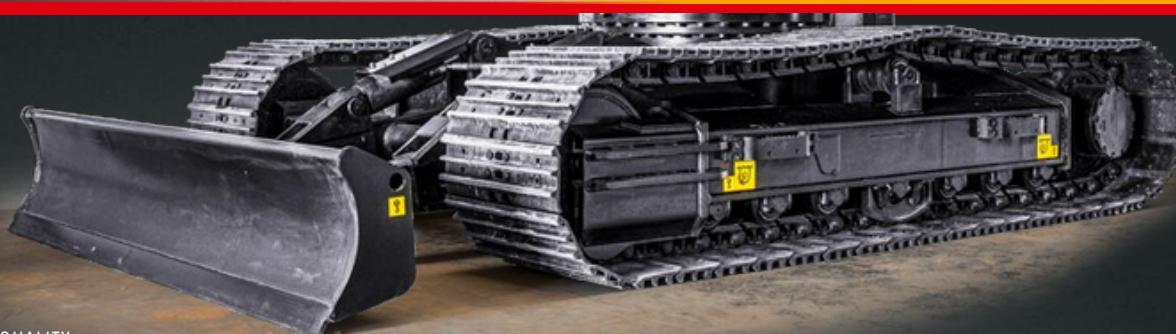


QUALITY

With the benefit of robustness

Durability and robustness are standard features on all SANY excavators. The reinforced structure of the SY135C lends the chassis exemplary stability, thereby prolonging the machine's service life. The top rollers also have double bearings, which significantly improve

durability and the guiding of the chain. What's more, all of the panels are made solely of metal, which makes them particularly resilient and facilitates repair, should there be any obstacles hindering this.

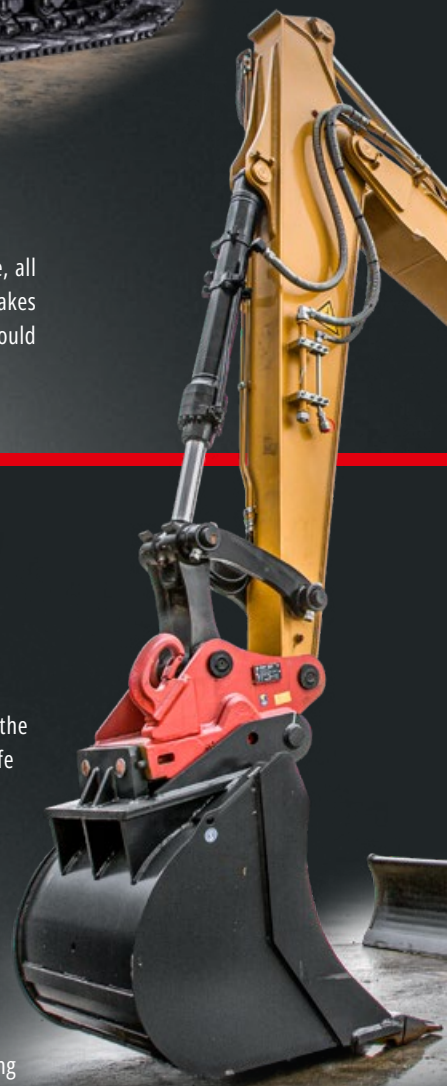


COMPONENTS

Flexibility as standard

The full hydraulic arrangement of the quick-coupler system guarantees that functions are perfectly integrated into the control menu, facilitating quick and safe attachment replacement. A further benefit is time and cost savings when compared with retrofitting.

Two proportional, individually adjustable control circuits are, of course, part of the standard equipment on the SY135C. The rotation line is fed by a separate pump to ensure smooth working at all times, even when several movements are being controlled simultaneously.



Absolute reliability – for peace of mind!

SANY's five-year warranty* gives you the assurance that you can fully count on your equipment.

* With participating partners

EFFICIENCY, COST-EFFECTIVENESS AND USER EXPERIENCE

USER EXPERIENCE

Control with feeling

The joystick control enables all functions of the excavator to be operated intuitively. The hydraulics valve control responds to commands immediately. Together with the automatic speed setting, this enables work to be carried out precisely and safely with higher efficiency and lower fuel consumption for the same operation. Not forgetting the large 7" touch display, which is easy to read and navigate, and displays all important information.



USER EXPERIENCE

THE PREMIUM CLASS OF OPERATOR COMFORT

A key feature of the SY135C is comprehensive comfort for its operator. This includes excellent insulation around the cab to provide reliable protection from noise and vibrations, as well as from high and low temperatures. The air-suspension operator's seat, provided as standard, offers the best possible comfort and protection from fatigue with its high seat backrest and various adjustment options. The new high-resolution 7" touch display is exceptionally user-friendly: The touch screen monitor can also be safely operated with work gloves. The comfort package is rounded off by plenty of space and room for movement, a 12 V jack, adjustable ventilation, heating and an automatic climate control system, a huge stowage space, various options for storage and much more.



Our highlights – the added benefits SANY offers you:

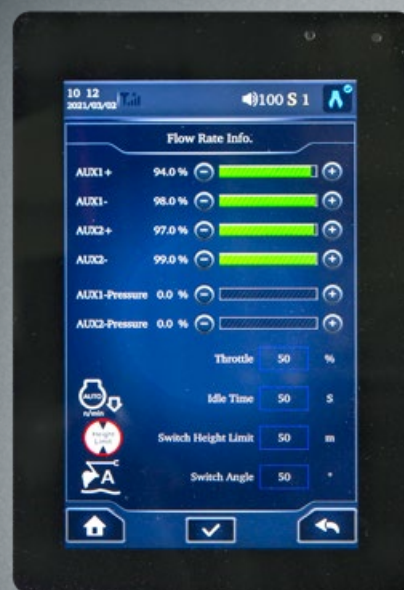
- + Rear camera
- + 2proportional auxiliary lines as standard
- + Large, high-resolution 7" touch display
- + Hydraulic arrangement of the quick-coupler line system
- + Extensive safety equipment
- + LED work lighting



USER EXPERIENCE

The all-rounder display

Offering many user-friendly functions, the large 7" touch display facilitates the operator's work and reduces stress. In addition to monitoring basic machine parameters, the display also offers a range of other options. High-resolution images from the rear camera can be displayed, and hydraulic parameters for various attachment devices can be configured with ease.



DIMENSIONS

EVERYTHING WITHIN REACH

The SY135C impresses on-site thanks to its stability and stableness, meaning it brings its power quickly and safety to where it is needed. Its large working radius is also a plus point, with a maximum horizontal reach of 8290 mm and maximum excavation depth of 5500 mm. The heavy dozer blade ensures additional stability.



TECHNICAL SPECIFICATIONS

ENGINE

Model	ISUZU 4JJ1X Stage V
Typ	Water-cooled, 4 cylinder, with commonrail and Adblue
Exhaust emissions	Stage V
Rated power	78.5 kW / 2000 rpm
Max. torque	375 Nm / 1 600 rpm
Displacement	2999 ccm
Batteries	2 x 12V / 120 Ah

SERVICE REFILL CAPACITIES

Fuel tank	250 l
Engine coolant	23.6 l
Engine oil	15 l
Drive (per side)	1.8 l
Adblue	20 l
Hydraulic oil tank	150 l

PERFORMANCE

Swingspeed	12 rpm
Max. travel speed	High 5.3 km/h, slow 3.1 km/h
Max. travel force	114 kN
Gradeability	35°
Bucket capacity	0.6 m ³
Groundpressure	0.39 kg/cm ²
Bucket digging force ISO	103 kN
Arm digging force ISO	67 kN

OPERATING MASS

SY135C	14 870 kg
--------	-----------

RELIEF VALVE SETTINGS

Implement circuit	343 bar
Swing circuit	250 bar
Travle circuit	343 bar
Pilot pressure	39 bar




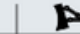




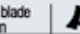
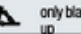


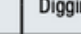

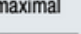
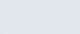
HYDRAULIC SYSTEM

Mainpump	2 x variable-piston-pump with electronic positive control
Max. oilflow	2 x 110 l/min
Travelmotor	Variable displacement axial piston motor
Swingmotor	Axial piston motor
Max. oilflow (AUX1)	110 l/min

UNDERCARRIAGE AND UPPER STRUCTURE

Boom length	4 600 mm
Arm length	2 500 mm
Bottomrollers	7
Toprollers	1
Rotation device	Planetary gear reducer driven by an axial piston motor, automatic hydraulic released slewing brake

LIFTING CAPACITIES OF LOWER AND UPPER DOZER BLADE *

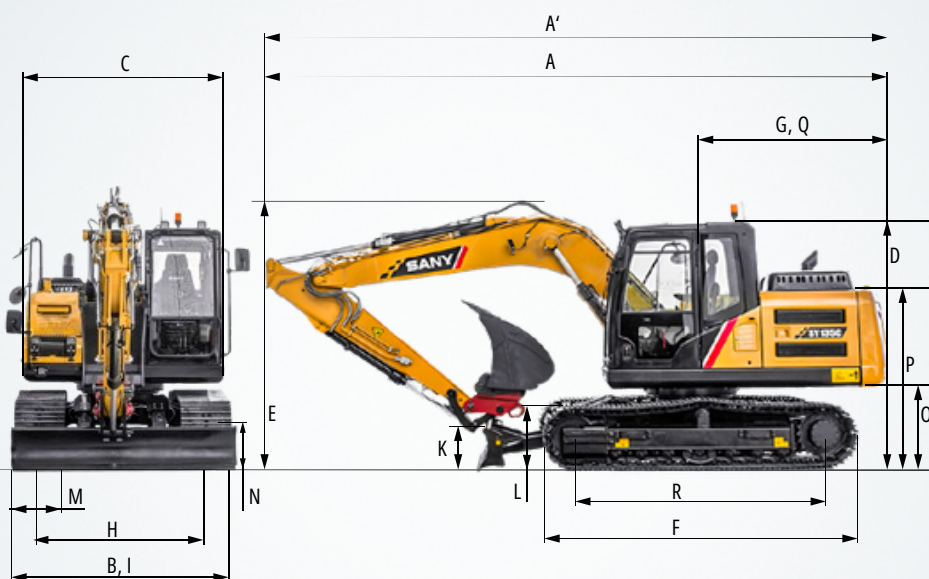
Load point height	Radius												Digging reach maximal				
	2.0 m		3.0 m		4.0 m		5.0 m		6.0 m		6.0 m		7.0 m		Capacity		mm
																	
7,0 m kg	3 200 3 200												2 550	2 550	4 248		
6,0 m kg	3 150 3 150												2 250	2 250	5 336		
5,0 m kg	3 500 3 500 2 400 2 400 2 400 2 400												2 100	2 100	6 066		
4,0 m kg	3 950 3 950 3 700 3 500 3 550 2 650 3 550 2 650												2 050	2 050	6 562		
3,0 m kg	5 800 5 800 4 650 4 650 4 050 3 400 3 700 2 600 3 700 2 600												2 050	2 050	6 875		
2,0 m kg	7 500 6 800 5 450 4 500 4 500 3 300 3 950 2 550 3 900 2 550 2 300 2 050												2 100	2 100	7 030		
1,0 m kg	6 800 6 450 6 150 4 300 4 900 3 200 4 150 2 500 3 800 2 500 2 450 2 000												2 200	2 200	7 039		
Ground line kg	6 750 6 300 6 500 4 200 4 900 3 100 4 300 2 450 3 750 2 450												2 350	2 350	6 901		
-1,0 m kg	4 550 4 550 8 450 6 250 6 550 4 100 5 200 3 050 4 250 2 400 3 750 2 400												2 600	2 600	6 607		
-2,0 m kg	6 900 6 900 8 150 6 300 6 300 4 100 5 000 3 050 3 950 2 400 3 750 2 400												3 050	3 050	6 135		
-3,0 m kg	9 600 9 600 7 200 6 350 5 600 4 150 4 350 3 100												3 750	3 750	5 437		
-4,0 m kg	5 500 5 500 4 150 4 150												3 550	3 550	4 402		

* at 600 mm track pads width

DIMENSIONS (TRANSPORT)

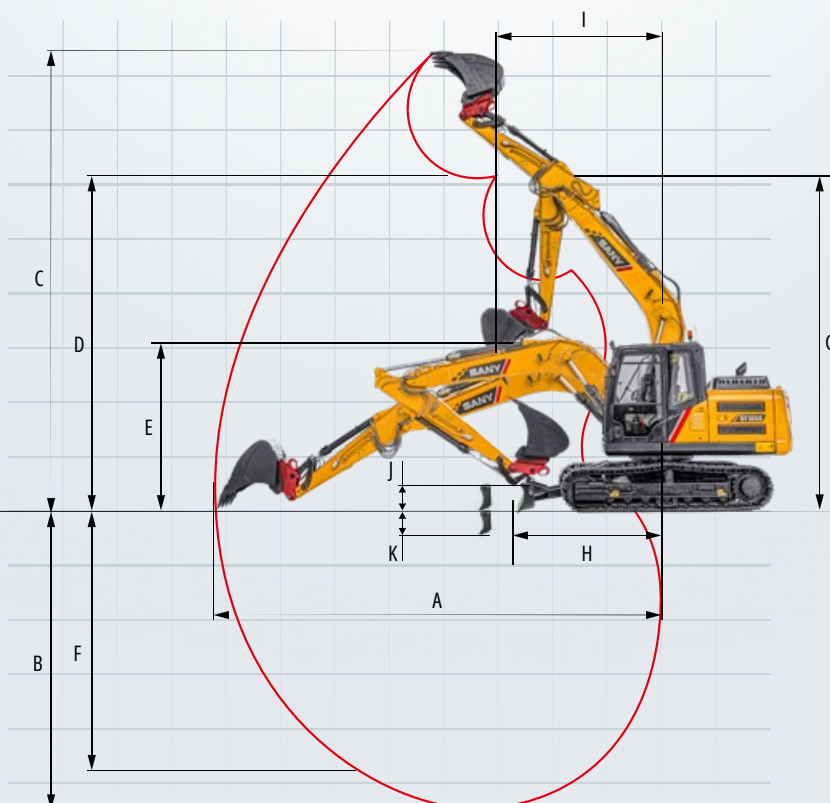
A Transport length	7 700 mm
A' Transport length (blade)	8 850 mm
B Transport width *	2 590 mm
Transport width **	2 490 mm
Transport width ***	2 690 mm
C Overall width of upper structure D	2 490 mm
Height over cabin/ROPS	2 820 mm
E Height of Boom – transport	2 815 mm
F Overall length of crawler	3 665 mm
G Tail length	2 205 mm
H Track gauge	1 990 mm
I Undercarriage width (blade) *	2 590 mm
Undercarriage width (blade) **	2 490 mm
J Horizontal distance to blade	2 650 mm
K Blade height	480 mm
L Track height	815 mm
M Track pads width	500 mm 600 mm 700 mm
N Min. ground clearance	425 mm
O Counterweigh clearance	910 mm
P Engine cover height	2 350 mm
Q Tail swing radius	2 205 mm
R Center distance of tumbler	2 930 mm

* at 600 mm track pads width
 ** at 500 mm track pads width
 *** at 700 mm track pads width



WORKING AREA

A Max. digging reach	8 290 mm
B Max. digging depth	5 500 mm
C Max. digging height	8 645 mm
D Max. dumping height	6 175 mm
E Min. dumping height	2 920 mm
F Max. vertical digging depth	4 850 mm
G Overall height over arm by min. swing radius	6 500 mm
H Arm head distance with work equipment retracted as far as possible	2 650 mm
I Min. swing radius	2 500 mm
J Max. clearance when blade up	490 mm
K Max. depth of blade down	320 mm





The SY135C – outstandingly well-equipped as standard

Already fitted ex-works with an excellent range of equipment. The SANY SY135C is superbly equipped as standard with optional additional equipment to broaden its scope of possible applications.

OPERATORS COMFORT / CABINE

Airsuspensio seat	•
Heater	•
Automatic air conditioning	•
C/H* Radio and speaker	•
Armrests (adjustable)	•
12v outlets	•
Wiper	•
7" touch display	•
Sky light openable	•
AUX 1 on joystick	•
AUX 2 on joystick	•
Integrated cooling box	•

WORKING LIGHTS

Lights – front (LED)	•
Lights – boom (LED)	•
Lights – platform (LED)	•

SAFETY

Battery master switch	•
Driving alarm	•
Warning beacon	•
Rear camera	•

WORKING EQUIPMENT

Boom and arm load holding valves with overload indicator	•
Double acting circuit for hydraulic quick coupler with piping	•
Breaker & Shear line proportional on joystick with piping	•
Rotation line proportional on joystick with piping	•
Oil flow rate adjustable for attachments	•

HYDRAULIC SYSTEM

Swing brake	•
2 speed travel	•
Piping for additional hydraulic function AUX 1	•
Piping for additional hydraulic function AUX 2	•
Hydr. Pre-pressure operating joysticks	•
Mainfilter	•

ENGINE/ENGINE COMPARTMENT

Auto idle	•
Fuel pump	•

UNDERCARRIAGE

Steel tracks	•
Cylinder guardes – dozer blade	•
Holes/loops for fixing	•

• Standard equipment Special option •

The standard and special options differ depending on the country in which the crawler excavator is delivered. If you have any questions, please contact your dealer directly. * The air conditioner contains fluorinated greenhouse gases: Refrigerant type: HFC-134a, Global warming potential: 1 430, Quantity: 0,85 kg, CO2e: 1,22 t

Parts supply – quick and reliable

With the purchase of a SANY compact excavator you have made an investment in the future. Fast availability of spare parts is your guarantee of minimal downtimes and failure times.



A SERVICE YOU CAN RELY ON

Just as we do with our excavators, we also demand high quality and reliability of our service products. This underlines our equipment's performance in terms of their durability and their excellent price-performance ratio. After all, maintenance is crucial

for efficiency, cost-effectiveness and safety. Your SANY dealer is happy to help you with a comprehensive range of services to ensure that your machine continues operating efficiently in the long term.

SANY – flexible, fast and always there for you

Rapid assistance, tailored advice and a reliable supply of original parts – that is what we mean by a premium service.



GERMANY
Cologne



The added benefits SANY offers you:

- + Fast supply thanks to the central warehouse near Cologne
- + More than 15,000 spare parts to make your machine highly reliable
- + Expert knowledge for optimal supply for your machine
- + Thanks to SANY's special training programme, our dealers are always kept up-to-date so that they can face all technical challenges.

Detailed information in black and white

Handbooks and documents are available for all SANY compact excavators, and these can help you with operation, maintenance, servicing and repairs. These include operating and maintenance instructions and technical specifications.



PERFORMANCE YOU CAN RELY ON

The SY135C resoundingly proves that the performance of a compact excavator is not necessarily determined by bulky size. Weighing a total of almost 15 tonnes, it offers the optimum ratio of power to manoeuvrability. In addition, the robust, wide heavy-duty undercarriage and the robust dozer blade provide a high level of stability. This means that it can optimally apply its power for a comprehensive range of applications where other machines have to adapt.

QUALITY IS WORTH IT

High-quality materials and careful machining are the basis for a long service life. This is part of a sophisticated concept: For example, the boom on the topside and underside is manufactured from one single sheet and welded continuously from front to back.

COMPACT POWER

All aspects of the machine have been developed to ensure excellent excavating forces at maximum stability, thereby offering enormous advantages.

EASY TO MAINTAIN

All routine checks and work on the machine can be carried out quickly and easily. For example, many of the machine's bearings can be lubricated with lubrication banks from just one point.

COMPREHENSIVE PROTECTION

Safety for users, machines and the working environment is of the utmost importance at SANY. The SY135C's safety equipment includes, amongst other features, a driving alarm and rotating beacon. The camera, in conjunction with the high-resolution 7" touch display, is an essential component of the safety equipment.

PERFECTLY PREPARED

The SY135C offers impressive flexibility during use. Hydraulic preparation allows different attachments to be used, without having to select any additional options.

EFFICIENCY AND POWER

In conjunction with the electronic fuel injection, the auto idle function adjusts the engine speed to the performance required – while the smart hydraulic system reduces the fuel consumption, engine wear and exhaust emissions.

TECHNICAL HIGHLIGHTS

Engine	ISUZU 4JJ1X Stage V
Rated power	78.5 kW / 2 000 rpm
Max. torque	375 Nm / 1 600 rpm
Max. travel speed	5.3 km/h
Swingspeed	12 rpm
Mainpump	2 x variable-piston-pump with electronic positive control
Max. oilflow	2 x 110 l/min

Not all products are available in all markets. As part of our continuous improvement process, we reserve the right to modify specifications and designs without giving prior notice. The figures may contain additional options.