

Stort utvalg av anleggsmaskiner

Vi har et bredt spekter av maskiner og tilbehør til anleggsbransjen. Vårt hovedfokus er tyngre anleggsmaskiner og utstyr.



SANY

Sany er et av de 500 største selskapene i verden med en markedsverdi på 130 milliarder kroner. Bedriften har et enormt varesortiment innen anleggsindustrien og er for eksempel verdens ledende produsent av betongpumper og beltegående kraner.

Maskiner fra Sany leveres til hele verden. De er verdens raskest voksende gravemaskinsmerke, og er for tiden verdens 6. største gravemaskinsprodusent.

Machine Partner AS er stolt forhandler av anleggsmaskiner fra Sany.

SY26U

SANY

Quality Changes the World



WHEN AGILITY COUNTS

SMALL. POWERFUL. FOR EFFICIENCY IN THE SMALLEST OF SPACES.

CONSTRUCTION MACHINERY



MINI EXCAVATORS
SY26U

Engine
YANMAR 3TNV80F
Rated power
15.2 kW / 2 500 rpm
Bucket capacity
0.06 m³
Operating mass
2 760 kg

SANY

For challenging tasks,
you need a first-class partner

Quality comes from experience. And from new ideas. This is why we combine these two crucial factors at SANY. This is because we are one of the leading producers, having sold more than 450 000 excavators worldwide. This means that you can always rely on sophisticated products that have been tried and tested in practice. An impressive 5-7 % of our annual turnover is dedicated to research and development. This is why we give you not only our word, but also our extraordinary five-year warranty as a guarantee of how powerful and robust our products are.

450 000

EXCAVATORS SOLD
WORLDWIDE

5-7 %

TURNOVER FOR RESEARCH
AND DEVELOPMENT

FIVE-YEAR WARRANTY *

Quality Changes the World

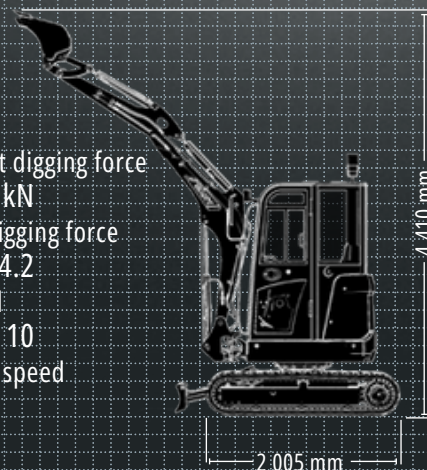


* Applicable in certain markets; please check with your local dealer.



SY26U HARD FACTS

Max. bucket digging force
27.9 kN
Max. arm digging force
(ISO) 14.2
Swingspeed
kN (ISO) 10
Max. travel speed
rpm
4.5 km/h





THE MOST COMPACT COMBINATION OF PERFORMANCE AND FUNCTIONALITY

The „small“ machines from SANY have always been among the greatest when it comes to cost effectiveness and efficiency – it's no different for the new SY26U mini excavator. It's in its element wherever it can demonstrate its speed and power, even in confined spaces. Its manoeuvrability and extremely precise control are also impressive in road

construction, horticulture and landscaping. The new small model shows its strengths even when just travelling to the workplace, as its comparatively low weight and compact dimensions allow for fast and safe loading and unloading. The SY26U is also available with cab or as a canopy version.*

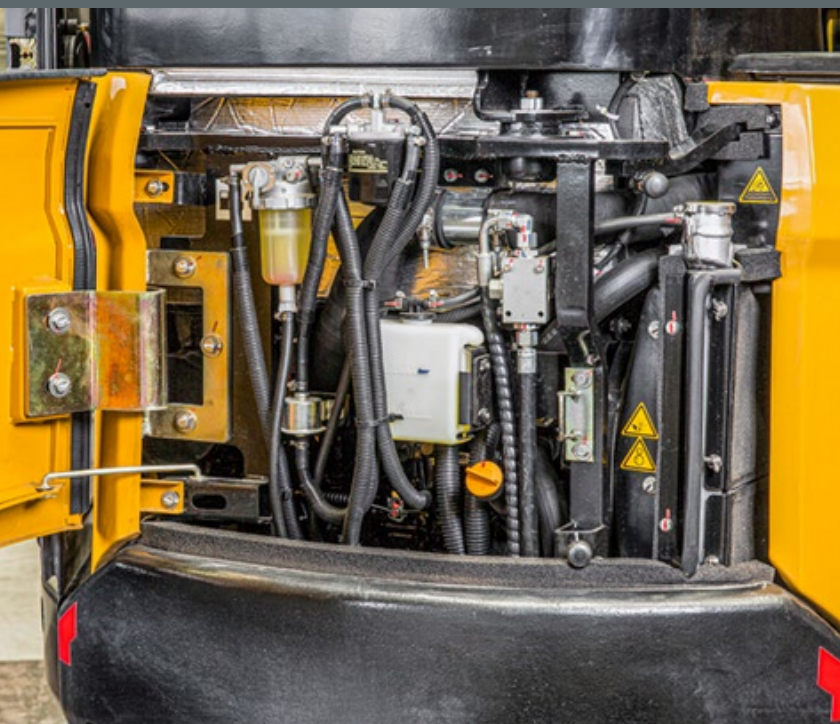
* The following texts in the brochure refer to both the cabin version and the canopy version of the SY26U.

TOP PROPERTIES

ECONOMY

FOR INTELLIGENT MINDS – PRODUCTIVITY MADE SIMPLE

The new SY26U boasts a whole host of properties that allow you to make crucial savings. These include, for example, the advanced load-sensing hydraulic system designed to improve speed and performance whilst simultaneously reducing fuel consumption.



Absolute reliability –
for peace of mind!

SANY's five-year warranty* gives you the assurance that you can fully count on your equipment.

* With participating partners

QUALITY

**Robustness included.
And a five-year warranty**

From the choice of materials and the design, right through to the workmanship, durability and robustness is a priority for all SANY mini excavators. They have been tried and tested time and again in tough practical applications. For example, all cladding parts are made solely of sheet metal, which makes them particularly long-lasting and easy to repair when necessary. And the five-year warranty gives you the peace of mind that you can fully count on your equipment.

Cleverly thought out – even when the cab doors are open, they still fit within the machine's turning radius.





DIMENSIONS

If you want to set your sights high, you will have to dig down deep

You won't reach your limits in a hurry with the new SANY mini excavator. The robust boom design and carefully considered weight distribution allows a maximum horizontal reach of 4850 mm, a maximum vertical reach of 4410 mm and an excavation depth of 2820 mm.

Its structure as a zero tail swing machine ensures that it can work well and quickly even on construction sites where space is tight.

QUALITY

Robust reliability – even the small models from SANY can work powerfully, meaning that it must be able to withstand enough. This is why they are built and machined solidly from the ground up, for example with highly-precise robot-welded seams, for example.

USER EXPERIENCE

Always making work easier – everyday work can be demanding for the excavator operator. We make it all a bit easier, for example, thanks to the comfortable, suspended seat, colour monitor and USB/Bluetooth radio included in the standard equipment.

DIMENSIONS

Small powerhouse – with its compact dimensions and manoeuvrability, the zero tail swing excavator can do its job best where space is tight, and the smart swivel bracket solution lends it increased agility.



SAFETY

Inherently safe – the SY26U is equipped with numerous safety details as standard. These include lockable covers and a battery disconnection switch, and the cylinder protection on the boom.

COMPONENTS

Improved details – good visibility is the foundation for good work. Powerful LED work lights illuminate the work area evenly. The YANMAR drive unit also impresses thanks to its reliability and power.

ECONOMY

Cost effectiveness as a benchmark – the efficient load-sensing hydraulic system controls the variable flow rate of the piston pumps, thereby guaranteeing sufficient power to carry out all operations smoothly and safely, as only the required power is provided.

SAFETY

Operating excavators by sight – truly impressive

A good view of outside is indispensable if you are to perform your work accurately and quickly. The SY26U's cab offers the operator a wide field of view, allowing them to keep an eye on all areas and work steps. The entire work area can be controlled with ease thanks to the large front, side and rear windows, without the driver having to get out of their seat. If work on a construction site takes a little longer, the LED headlights illuminate everything perfectly. Further advantages of this system include its low energy consumption and a much longer service life.



Our highlights – the added benefits SANY offers you:

- + 2 proportional auxiliary lines with joystick control as standard
- + 8 storable attachments
- + Double acting circuit for hydraulic quick-coupler with piping
- + Safety valves on arm and boom
- + Triple flange drive rollers
- + LED working lights
- + Bluetooth/USB radio

ECONOMY

SY26U CANOPY: OPEN TO MORE OPTIONS

Same technology, same performance – the SY26U is also available as a canopy version. With a perfect view outside of the work area and, of course, with safety precautions in accordance with the current safety directives.



TECHNICAL SPECIFICATIONS

ENGINE

Model	YANMAR 3TNV80F
Typ	Water-cooled, 3 cylinder, diesel engine with turbulence chamber fuel injection
Exhaust emissions	Stage V
Rated power	15.2 kW / 2 500 rpm
Max. torque	65.6 Nm / 1 793 rpm
Displacement	1 267 ccm
Batteries	1 × 12 V / 60 Ah

HYDRAULIC SYSTEM

Mainpump	Variable displacement axial piston pump
Max. oilflow	81 l/min
Max. oilflow (AUX 1)	42.5 l/min
Max. oilflow (AUX 2)	42.5 l/min
Travelmotor	Variable displacement axial piston motor
Rotation device	Axial piston motor with parking brake

SERVICE REFILL CAPACITIES

Fuel tank	34 l
Engine coolant	4.1 l
Engine oil	3.4 l
Drive (per side)	0.6 l
Hydraulicsystem	45 l
Hydraulic oil tank	30 l

PERFORMANCE

Swingspeed	10 rpm
Max. travel speed	High 4.5 km/h, slow 2.6 km/h
Max. travel force	20 kN
Bucket capacity	0.06 m ³
Groundpressure	0.26 kg/cm ²
Gradeability	25°
Bucket digging force ISO	27.9 KN
Arm digging force ISO	14.2 KN

OPERATING MASS

SY26U	2 760 kg
SY26U Canopy	2 700 kg

UNDERCARRIAGE AND UPPER STRUCTURE

Boom length	2 100 mm
Arm length	1 300 mm
Bottomrollers	3
Rotation device	Axial piston motor with planetary gear running in oil bath and single-row slewing ring. Spring-loaded slewing gear parking brake, hydraulically released.
Undercarriage	Reinforced undercarriage with larger dimensions. Welded drive frame in box design made of special material. Side frame welded to the drive frame.

RELIEF VALVE SETTINGS

Implement circuit	245 bar
Swing circuit	196 bar
Travel circuit	245 bar
Pilot pressure	35 bar

LIFTING CAPACITIES OF LOWER DOZER BLADE

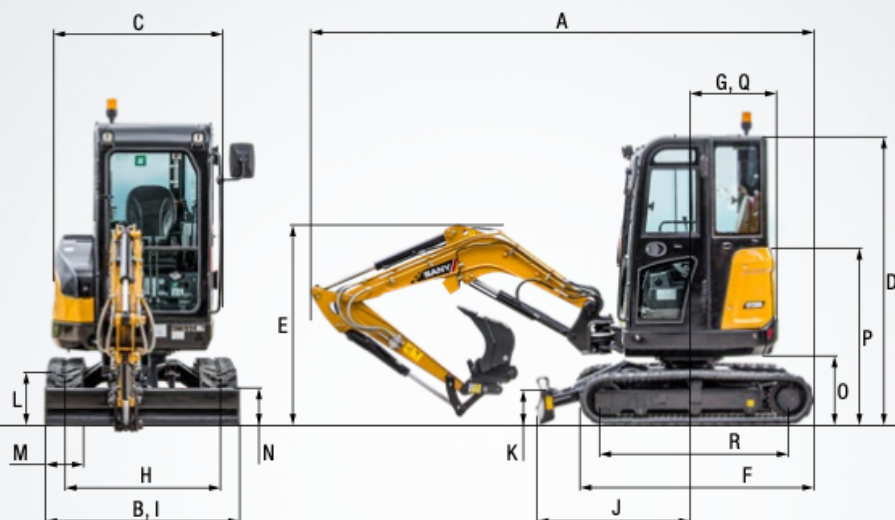
Load point height	Radius				Digging reach		
	2,0 m	3,0 m	4,0 m	Max.	mm		
4,0 m kg					693	584	2590
3,0 m kg					540	365	3550
2,0 m kg					493	282	4000
1,0 m kg					507	256	4180
Ground line kg	1521	715	1095	398	732	267	582 263 4045
- 1,0 m kg	1807	722	1012	395	730 316 3560		
- 2,0 m kg	883	786			609	576	2420

LIFTING CAPACITIES OF UPPER DOZER BLADE

Load point height	Radius				Digging reach		
	2,0 m	3,0 m	4,0 m	Max.	mm		
4,0 m kg					693	584	2590
3,0 m kg					438	365	3550
2,0 m kg					340	282	4000
1,0 m kg					310	256	4180
Ground line kg	910	715	488	398	324	267	320 263 4045
- 1,0 m kg	917	722	485	395	385 316 3560		
- 2,0 m kg	883	786			609	576	2420

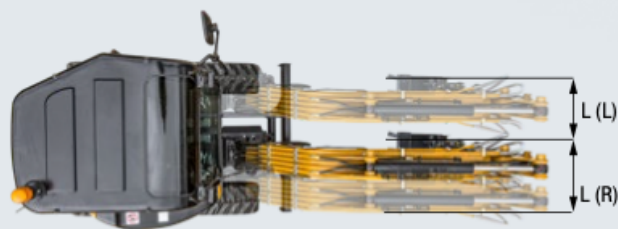
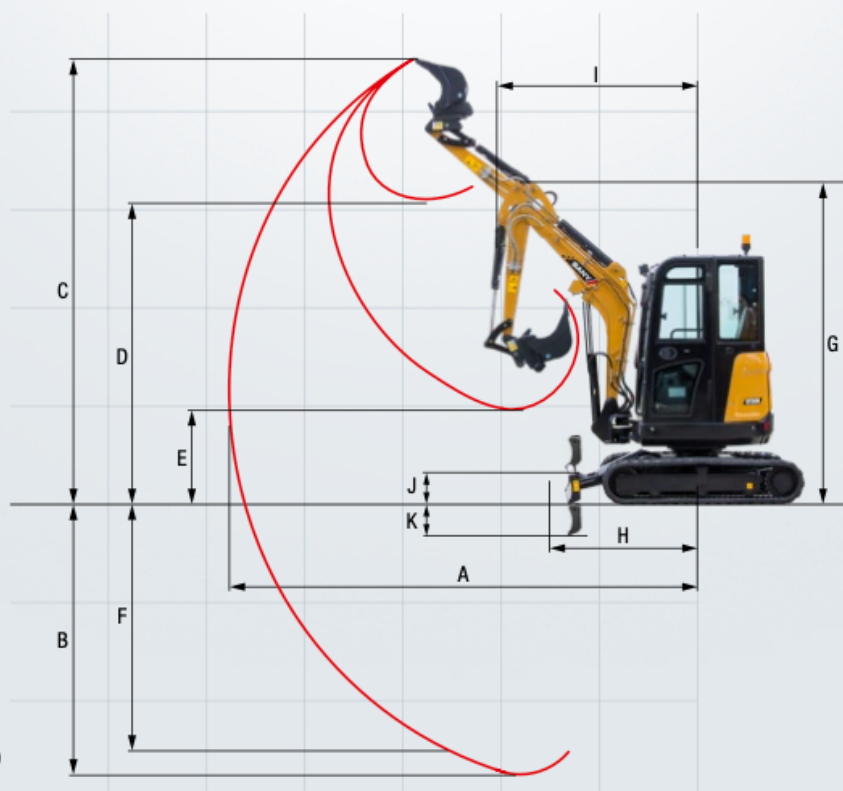
DIMENSIONS (TRANSPORT)

A	Transport length	4285 mm
B	Transport width	1550 mm
C	Overall width of upper structure	1375 mm
D	Height over cabin/ROPS	2430 mm
E	Height of Boom – transport	1620 mm
F	Overall length of crawler	2005 mm
G	Tail length	775 mm
H	Track gauge	1250 mm
I	Undercarriage width (blade)	1550 mm
J	Horizontal distance to blade	1295 mm
K	Blade height	300 mm
L	Track height	445 mm
M	Track pads width	300 mm
N	Min. ground clearance	290 mm
O	Counterweight clearance	555 mm
P	Engine cover height	1460 mm
Q	Tail swing radius	775 mm
R	Center distance of tumbler	1560 mm



WORKING AREA

A	Max. digging reach	4850 mm
B	Max. digging depth	2820 mm
C	Max. digging height	4410 mm
D	Max. dumping height	3100 mm
E	Min. dumping height	940 mm
F	Max. vertical digging depth	2585 mm
G	Overall height over arm by min. swing radius	3200 mm
H	Arm head distance with work equipment retracted as far as possible	1490 mm
I	Swing radius by max. boomswing (L)	1760 mm
	Swing radius by max. boomswing (R)	1795 mm
	Min. swing radius	2110 mm
J	Max. clearance when blade up	360 mm
K	Max. depth of blade down	380 mm
L	Offset boom (L)	765 mm
	Offset boom (R)	508 mm
	Max. boom-swing angle (L)	67°
	Max. boom-swing angle (R)	45°



Powerful and mobile – the SY26U is well-equipped by its very nature!

It has everything it needs to become an indispensable aid. Its impressive properties include not only its power and endurance, but also the precise response characteristics of all the components thanks to the sophisticated hydraulic system. Outstanding performance for a fair price: That's what we call cost-effective.



OPERATORS COMFORT / CABINE

Heater	•	•
Armrests (adjustable)	•	•
12v outlets	•	•
Wiper	•	•
AUX 1 on joystick	•	•
AUX 2 on joystick	•	•
Suspended seat	•	•
8 stored hydraulic settings for attachments	•	•
USB/Bluetooth Radio	•	•
Removable front-window	•	•

SAFETY

Battery master switch	•	•
Travel Alarm	•	•
Emergency lowering system	•	•

WORKING EQUIPMENT

Breaker&Shear line proportional on joystick with piping	•	•
Rotation line proportional on joystick with piping	•	•
Flow adjustment for attachments	•	•
Double acting circuit for hydraulic quick coupler with piping	•	•
Boom and arm load holding valves with overload indicator	•	•
Safety valve on blade cylinder	opt	opt

WORKING LIGHTS

Lights - front (LED)	•	•
Lights - boom (LED)	•	•

UNDERCARRIAGE

Rubber tracks 300 mm	•	•
Holes/loops for fixing	•	•

ENGINE/ENGINE COMPARTMENT

Diesel filter	•	•
Cage or storage for grease gun	•	•
Airfilter guard	•	•

HYDRAULIC SYSTEM

Swing brake	•	•
2 speed travel	•	•
Hydr. Pre-pressure operating joysticks	•	•
Filter for pre-pressure circle	•	•

SY26U SY26U Canopy •

The standard and special options differ depending on the country in which the mini excavator is delivered. If you have any questions, please contact your dealer directly.

Parts supply – quick and reliable

With the purchase of a SANY mini excavator you have made an investment in the future. Fast availability of spare parts is your guarantee of minimal downtimes and failure times.



A SERVICE YOU CAN RELY ON

Just as we do with our excavators, we also demand high quality and reliability of our service products. This underlines our equipment's performance in terms of their durability and their excellent price-performance ratio. After all, maintenance is crucial

for efficiency, cost-effectiveness and safety. Your SANY dealer is happy to help you with a comprehensive range of services to ensure that your machine continues operating efficiently in the long term.

SANY – flexible, fast and always there for you

Rapid assistance, tailored advice and a reliable supply of original parts – that is what we mean by a premium service.



The added benefits SANY offers you:

- + Fast supply thanks to the central warehouse near Cologne
- + More than 15,000 spare parts to make your machine highly reliable
- + Expert knowledge for optimal supply for your machine
- + Thanks to SANY's special training programme, our dealers are always kept up-to-date so that they can face all technical challenges.

Detailed information in black and white

Handbooks and documents are available for all SANY mini excavators, and these can help you with operation, maintenance, servicing and repairs. These include operating and maintenance instructions and technical specifications.



HIGHLIGHTS SY26U

COMPACT POWERHOUSE FOR THE FINER DETAILS

Intricate tasks on construction sites in towns and cities or in horticulture and landscaping depend on manoeuvrability and precise control. This, combined with a great deal of power, makes the SY26U a high-quality powerhouse, and therefore a reliable partner for you.



ROBUST RELIABILITY

High-quality materials and careful machining guarantee the highest degree of solidity and stability even under stress.

ALWAYS COMFORTABLE

Whether with a cab or as a canopy – the cockpit is equipped with comprehensive comfort equipment, making it easy for the operator to maintain concentration throughout the day.

SMALL POWERHOUSE

Thanks to its compact design, the SY26U greatly simplifies working on confined construction sites. With its compact dimensions, it offers the best conditions to be easily attached to a car trailer.

INHERENTLY SAFE

Maximum safety for drivers, the construction site environment and the machine itself is integrated on-board as standard. This means you can count not only on the protection of people and machines, but also on an optimum level of operational safety.

IMPROVED DETAILS

Extensive standard features and equipment with high-quality components from tried and tested brand manufacturers make the SY26U a reliable partner and the machine in virtually every application.

COST EFFECTIVENESS AS A BENCHMARK

The smart control system adapts the pump power to the available engine power. For greater efficiency of the hydraulic system and reduced fuel consumption.

TECHNICAL HIGHLIGHTS

Engine	YANMAR 3TNV80F
Rated power	15.2 kW / 2 500 rpm
Max. torque	65.6 Nm / 1 793 rpm
Max. travel speed	4.5 km/h
Swingspeed	10 rpm
Mainpump	Variable displ. axial piston
Max. oilflow	pump 81 l/min



„AGILE, JUST LIKE WE NEED IT!“

Björn Sklarek (machine operator) – Elektro-Würkner GmbH

Not all products are available in all markets. As part of our continuous improvement process, we reserve the right to modify specifications and designs without giving prior notice. The figures may contain additional options.